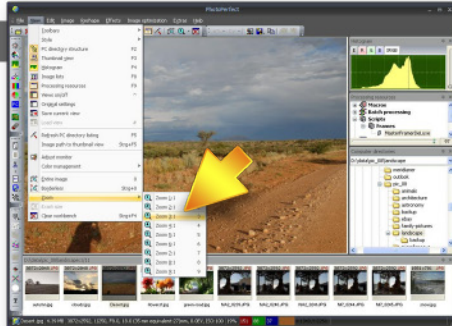


Tutorial 3: Retouching

STEP 1

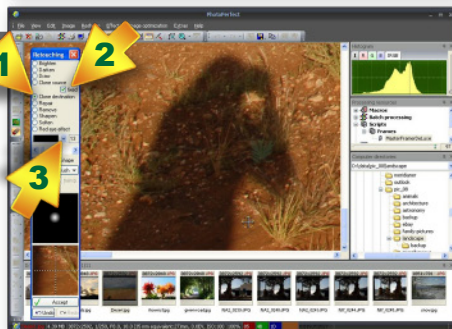


This tutorial shows you how to use PhotoPerfect's retouching function to remove a photographer's shade from the foreground of the picture.

► Open picture and zoom in for repair details

To zoom into the picture you can use the menu items "View/zoom" and move the enlarged picture around the workbench so that the desired area covers most of the screen.

STEP 2



► Select "Image/Retouching" and define type and brush

Select the menu item "Image/Retouching". The retouching window opens up. In the retouching window select "clone destination" (1), check the "fixed" checkbox (2) and set the brush size to a value of 20 using the sidebar (3). The brush is the circle that follows your mouse.

STEP 3



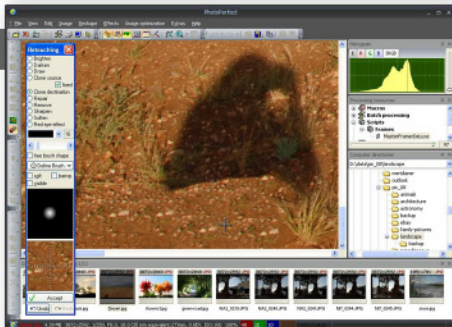
► Set brush reference point and retouche

Move the brush to a point **outside the shade** of the image where color and texture is **similar** to an area **inside the shade** you wish to repair. Now press [ctrl] + left mouse button to define the "brush reference point" (1).

Once the reference point is set, a left-click into any area of the shady part of the picture will smoothly apply texture and color of the reference point to the area you clicked in. The more often you click, the sharper the reference point will be visible within the shade (2).

Click the "Accept" button of the retouching window to apply your changes.

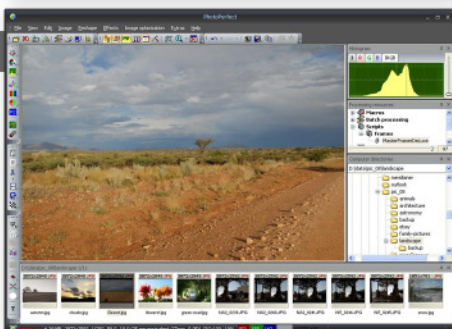
STEP 4



► Repeat step 3 with different reference points

Left-click on every part of the shade to completely brighten it up. Try to use different reference points and -sizes to achieve a more natural looking result.

RESULT



Result

By using different reference points and brush-sizes a result was achieved where the shade was completely brightened up and the characteristics of the foreground could be preserved.