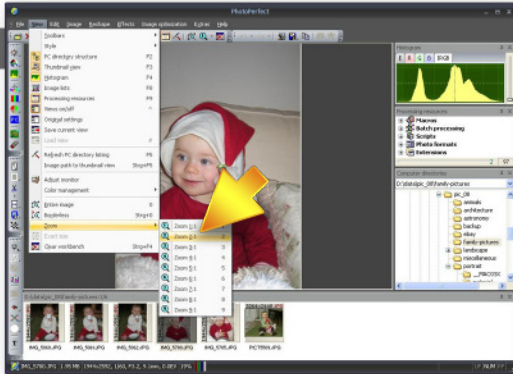


Tutorial 2: remove red-eye effect

STEP 1



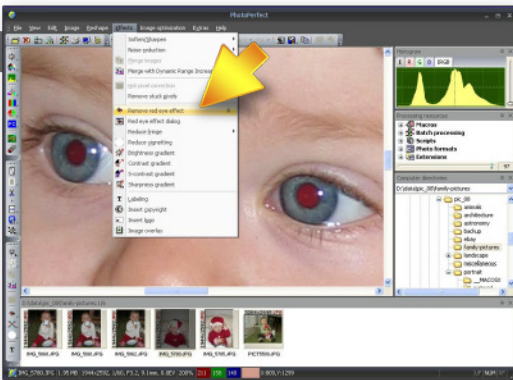
The red-eye effect is one of the most annoying results when using a flash in a dark environment. The light of the flash is reflected by the retina of the eye, coloring it deep red.

This tutorial shows you how to use PhotoPerfect's red-eye-removal tool to remove the red colors out of the eye

► Open picture in PhotoPerfect

To zoom into the picture you can use the menu items "View/zoom" and move the enlarged picture around the workbench so that one eye covers most of the screen (as seen in the example on the left side).

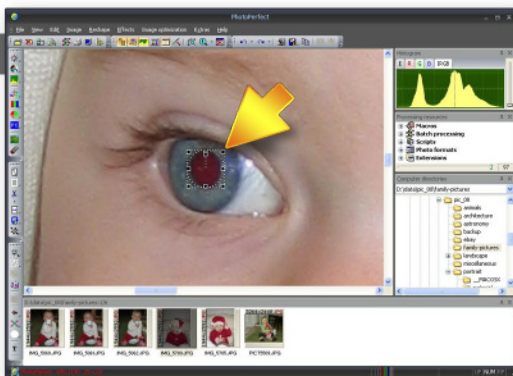
STEP 2



► Select "Remove Red Eye Effect"

Go to the menu "Effects" and select the "Remove Red Eye Effect". The mouse-pointer changes to a cross now.

STEP 3

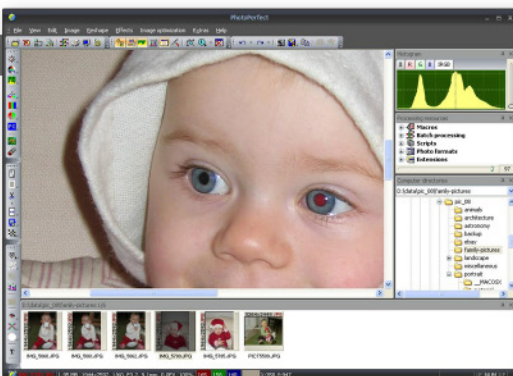


► Select the red eye

Move the mouse-pointer to one edge of the red eye and press the left mouse button once. Then move the mouse to the opposite edge of the red eye and press the left mouse-button again. The area between the two clicks will be covered with a frame.

If the red eye is not framed exactly you can re-position the frame by moving it around with the mouse or change it's size with the mouse.

RESULT



► Remove red color

Right click into the frame to remove the red color.