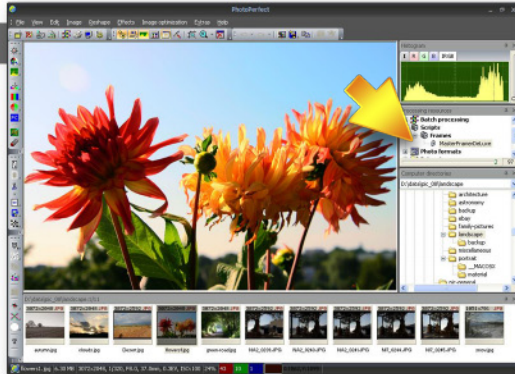


Tutorial 5: Frame your pictures

STEP 1

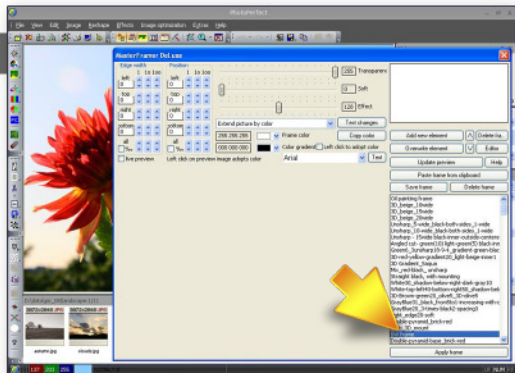


This tutorial shows you how to use PhotoPerfect's Master Framing DeLux tool to frame your pictures.

► Open the MasterFramerDeLux

Double click on the "MasterFramerDeLux" (MFDL) tool from "Scripts / Frames" of the "Processing Ressources" Window on the right side of the PhotoPerfect screen. If the processing Ressources Window is not visible press the F9-Key to open it up.

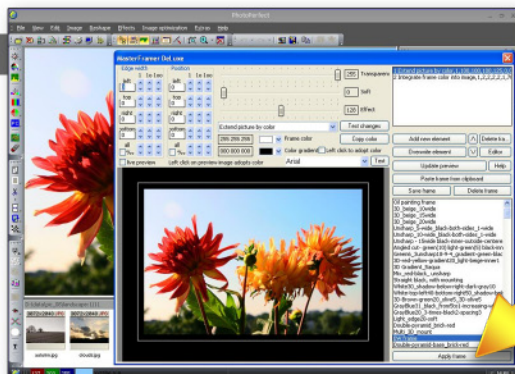
STEP 2



► Double click on "BW frame"

The picture will be displayed in the preview window with the frame applied to it.

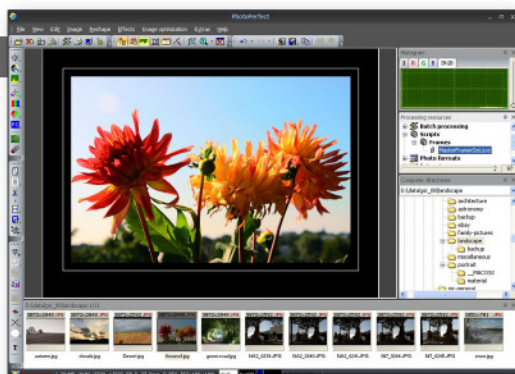
STEP 3



► Click on "Apply Frame"

This applies the frame to the picture and closes the MFDL. The picture with the frame applied to it is presented to you in the PhotoPerfect main screen.

RESULT



► Save your result

If you like the result you can save the new picture with the "File / Save as" function. But please note: Since the frame was added to it your picture is larger now. The MFDL is a very powerful instrument that already contains more than 250 predefined frames but also lets you create your own ones. Try to play around with it a bit and read the "MasterFramerDeLux" section in the manual.