

## Free Download!

Get the latest release with  
new features at  
[www.arcadiaoftware.com](http://www.arcadiaoftware.com)

# PhotoPerfect

Discover the true potential of your photos



PhotoPerfect combines the power of professional photo-editing tools with the simplicity of one-click image optimizations to give professional and semi-professional photographers the ability to create the best possible images. Start with one-click photo optimizations; then challenge yourself to achieve your dream shot.

### Perfect your pictures with one click

PhotoPerfect's one-click optimization feature will have you perfecting your photos in record time. PhotoPerfect uses Xe847, the first-of-its-kind filter technology, to produce digital photos as perceived by the human eye. With one click you'll achieve results so good your picture may need no further enhancement.

### Explore your photos' full potential

With a rich functionality and range of features, PhotoPerfect helps you achieve the professional results you demand. With advanced photo-editing tools at your fingertips – like exposure correction, selective color saturation and framing – there's no limit to what you can accomplish.

### Experience refined functionality designed for professional photographers

While other photo-editing products offer a confusing plethora of graphic design and imaging features, PhotoPerfect is a sophisticated tool designed specifically for photographers. You'll find all the photo-editing features of more expensive software, but with a refined functionality to assist you in mastering your professional image-editing techniques, while achieving a new level of results.

### Essential image enhancement functions

- » Brightness and contrast correction
- » Correction of flash effects, backlight effects and shadow brightening
- » Remove red eye effects
- » Saturation setting (also selective)
- » Comprehensive histogram correction facilities
- » Perform retrospective white balance
- » Color balance, color temperature, stepless channel switch
- » Noise suppression / Color noise suppression

### Advanced image enhancement functions

- » Various advanced softening and sharpening tools (USM)
- » Lab curves for editing images in Lab color space
- » Band filter for removal of symmetrical distortion
- » 16 bit support for RAW and TIFF files
- » Import and edit RAW files
- » Merging with Dynamic Range Increase (DRI)
- » Enhance PhotoPerfect with PhotoShop compatible plugins
- » Write your own batch-scripts using the integrated scripting-engine
- » Remove color casts using multi-stage gray balance technique
- » Comprehensive masking functions
- » Color vibrance for selectively tweaking the saturation of over- or under saturated areas
- » Brightness gradient
- » Intelligent retouching function with repair and remove brushes
- » MonochromiX extension for advanced black & white (grayscale) conversion
- » Color management for monitor display and output on various devices
- » 'Replace masked area': insert masked image area from original image
- » Generate, edit and save Exif and IPTC data



**arcadia**   
SOFTWARE

# Seeing is believing

## System requirements

- Windows 2000, XP or Vista
- 20 MB of available hard-disk space
- Intel® Pentium® 4 Processor
- 256 MB of RAM (512 MB recommended for Windows 2000 and XP, 1 GB for Vista)
- 1024x768 screen resolution

When it comes to photo enhancements, PhotoPerfect offers an extensive range of professional features not found in comparably-priced photo editing tools. With PhotoPerfect, you control the end result.

## One-Click Optimizations

PhotoPerfect uses automatic optimization technology to reduce color-shifts from ambient light or bad camera white balance. It corrects contrast, brightness and color; applies global and selective color corrections; and makes blue sky, foliage and skin-tones look more natural. Preview the results and toggle easily between the original photo and the optimized photo. Select the result you like best and click on "execute" to view your fully optimized photo in full screen mode.

## Masking

What more expensive programs do with layers, PhotoPerfect more easily achieves with masking. Frame the image to be masked, click by click, using the polygon masking tool. Click to apply the mask to the picture, then invert the mask. The change will affect the background and not the image. PhotoPerfect lets you soften the the edges of the mask to avoid hard edges and achieve professional results.

## Tilt & Shift

PhotoPerfect offers Shifting, a popular feature available in some high-end manual lenses for correcting perspective distortions in landscape and architecture photography.

## Raw-Image Processing

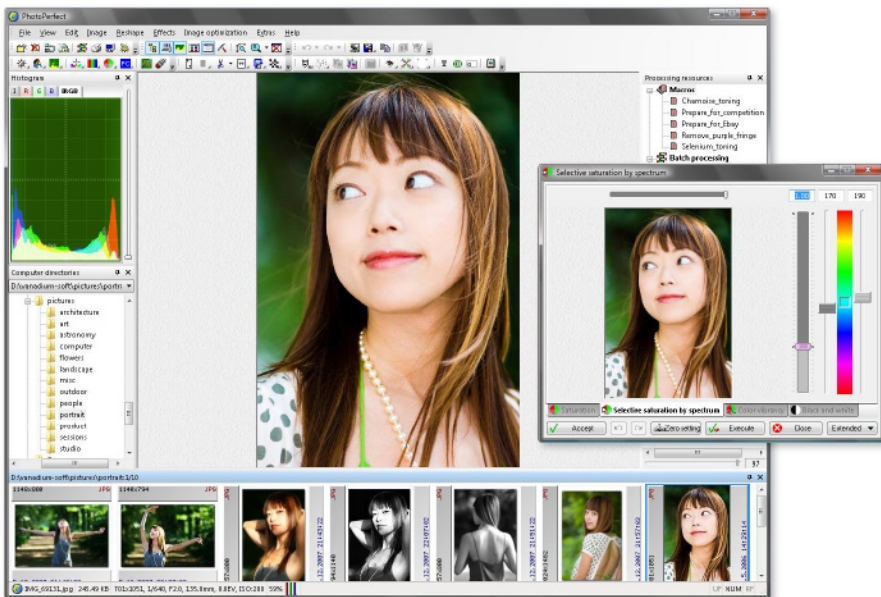
PhotoPerfect lets you convert raw files and apply either manual or automatically image optimizations.

## Gray Balancing

By choosing the neutral gray areas to set the highlight selections in your image, PhotoPerfect will use these as reference points for calculating the gray balance.

## Selective Editing Functions

PhotoPerfect offers a number of functions for editing only a selected part of the image. These include selective dimming/brightening, selective saturation by spectrum, and selective contrast and color vibrancy.



## Retouching

Retouching is a powerful tool to easily remove blemishes from your photos. Select your brush and frame the target area you want to remove. Then look for a suitable section in the image for your source area. Select "Repair" from the retouching dialogue and left click once on the selected blemish. The structure of the source area is taken over and adapted to the target area. The results are natural and undetectable.